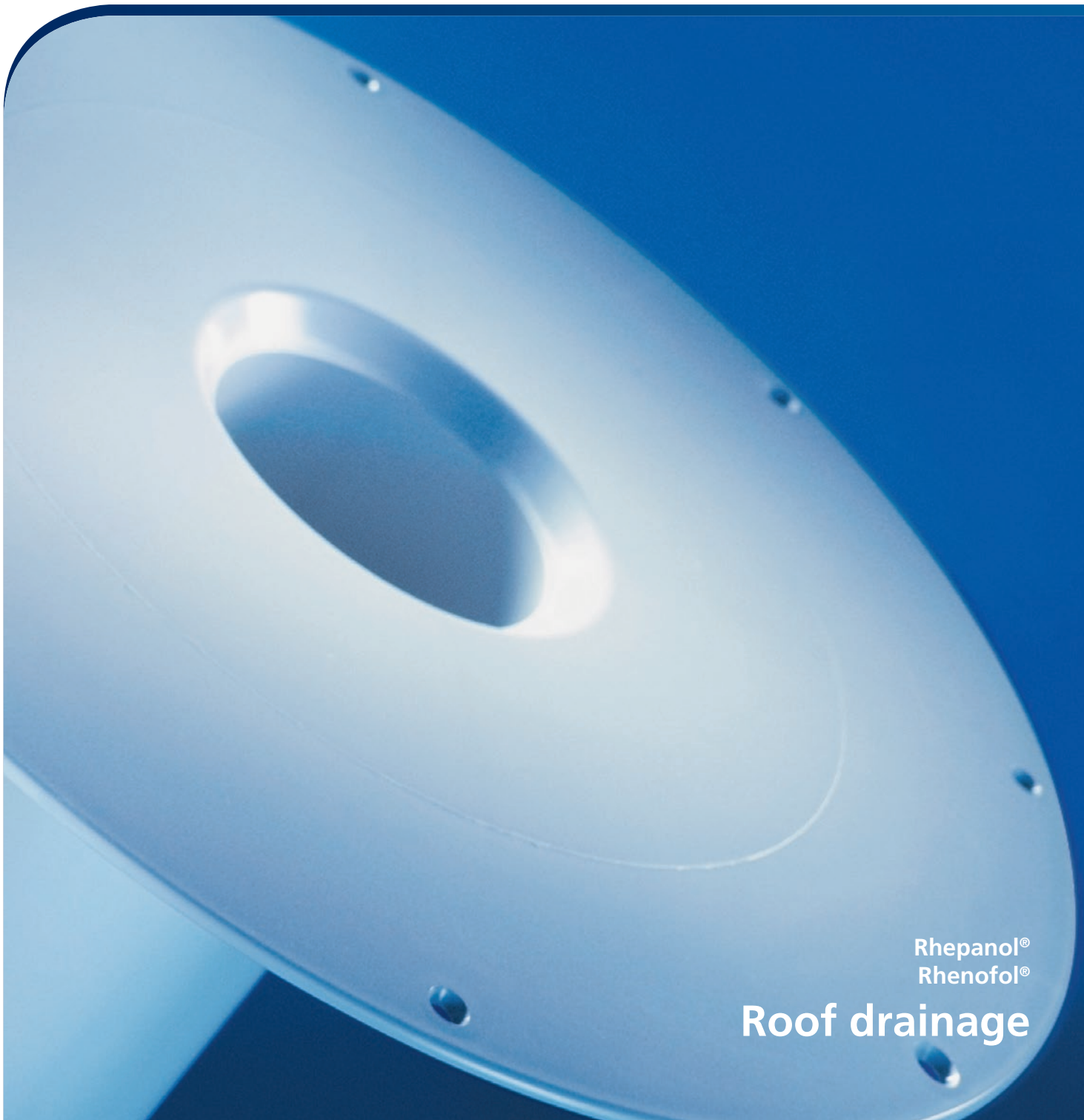


▶▶ Keep it safe and dry.



Rhepanol®  
Rhenofol®  
**Roof drainage**

▶▶ **Also suitable for 'centennial' rain:  
rainwater outlets, water spouts and emergency outlets**



**Highly efficient drainage of precipitation**

An inoperable flat roof drainage system can turn into a disaster. Including all kinds of damage, from damp walls to collapsed roofs. By employing the new FDT drainage components, however, everything is going to be on the right track.

In addition to the well-known VarioGully system the following elements are available:

- rainwater outlets
- water spouts
- emergency outlets

The application of rainwater and emergency outlets is particularly recommended on small areas, for refurbishment and in special cases.



**Alternative 1:  
rainwater outlet system**

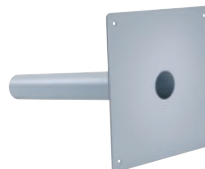
The true advantage of this built-in element is its simple installation. An ideal solution e. g. when it comes to upgrading a roof during refurbishment. The rainwater outlet can be installed in the existing opening in no time at all. A selection of nine different outer diameters for both the Rhepanol and the Rhenofol roofing membrane system always provides you with the right size outlet. Accessories are also available:

- leaf guard (to be cut to size)
- lip seals (for safe installation preventing backflow directly into the downpipe or old rainwater outlets)



**Alternative 2:  
water spout**

When waterproofing e. g. terraces, canopies and garages, the FDT water spout can be installed for collecting and draining heavy precipitation. This item is available in three different designs and with a system-compatible flange for both roofing membrane systems.



**Alternative 3:  
emergency outlets**

'Centennial' rainfall. Safety precautions are to be taken on any building for such an occurrence that may come out of the blue. The standards DIN EN 12056-3 and DIN 1986-100 as well as the Instructions for Flat Roofs comprise the regulations for a sufficient drainage. When installed in a sufficient number, FDT emergency outlets provide complete drainage of the rainwater from the whole roof or individual roof areas. Two types are available: with a pipe for smaller roof areas and a sink-type for larger roof areas. In addition, we offer tailor-made, i. e. special type outlets according to specification or requirement. FDT shall be glad to provide you with this service also.



**FDT FlachdachTechnologie  
GmbH & Co. KG**

Eisenbahnstraße 6-8  
68199 Mannheim  
Germany

Tel +49-6 21-85 04-3 72  
Fax +49-6 21-85 04-3 78  
www.fdt.de